

## COURSE CONTENT

### Selecting a Predefined Icon Set



Figure 1



Figure 2

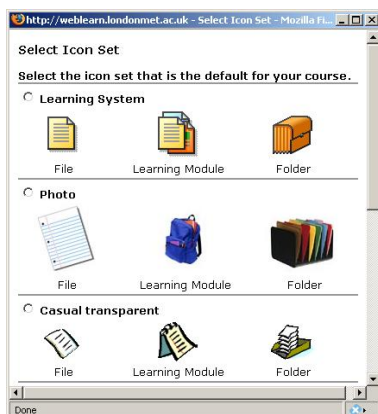


Figure 3

1. Click on the **Manage Course** link in the Designer Tools menu, figure 1.
2. Click on the **Course Content Icons** link, figure 1
3. Click on the **Select New Content Icon Set** button, figure 2
4. Click on the radio button to the left of the icon set you want to use.
5. Click on the **Select** button at the bottom of the **Select Icon Set** window. The **Course Content Icons** screen displays the new icon set as seen in figure 3.
6. Click on the **Apply** button. A success message displays at the top of the Course Content Icons screen confirming that the icon images have been applied successfully.
7. Click on the **Cancel** button to return to the **Manage Course** screen.

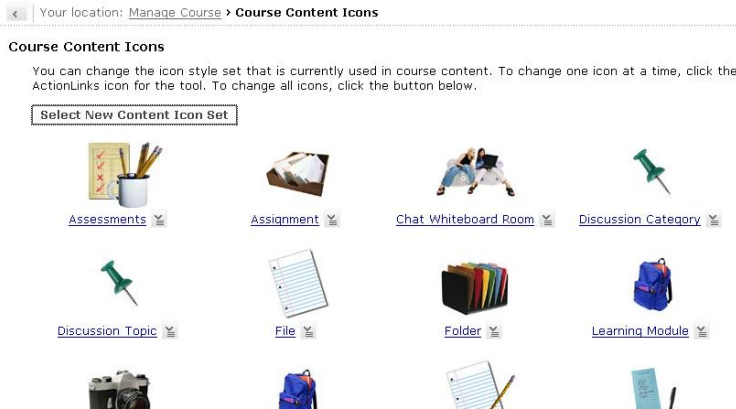


Figure 4

## Selecting Custom Course Content Icons



Figure 5

1. Click on the **Manage Course** link in the Designer Tools menu. The **Manage Course** screen displays as seen in figure 5.
2. Click on the **Course Content Icons** link. The **Course Content Icons** screen displays as seen in figure 5.
3. Click on the action link to the right of the title of the icon that you would like to change. A drop-down menu appears as seen in figure 6.



Figure 6

4. Select the **Replace Image** option from the drop-down menu. The **Get Files** window opens as seen in figure 30.
5. Search for the image you need to use in My Files, Class Files or My Computer.
6. Click on the radio button to the left of the image you want to select.

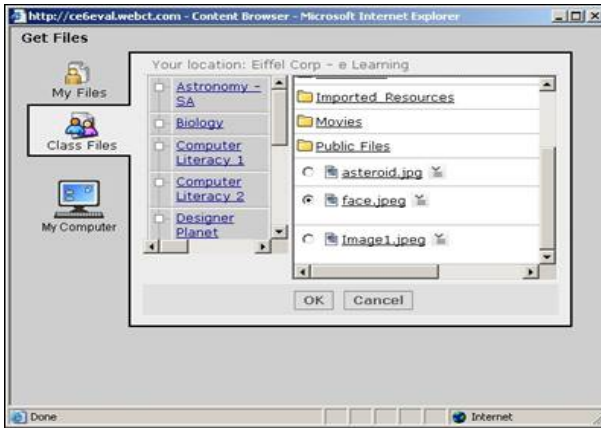


Figure 7

8. Repeat step 3 - 7 for each icon you want to replace.



Figure 8

9. Click on the **Apply** button to save your changes.

The screen refreshes and a message appears confirming that the icon image(s) have been applied successfully.

## Revert To Original Icon

To revert from a custom icon to the original WebLearn icon:



Figure 9

1. Click on the action link to the right of the title of the icon you want to revert to the original as seen in figure 9.
2. Select the **Revert to Original** drop-down menu option. The **Course Content Icons** screen refreshes and the original WebLearn icon displays.
3. Click on the **Apply** button to save the changes. The screen refreshes and a message appears confirming that the icon image(s) have been applied successfully.
4. Click on the **Cancel** button to return to the **Manage Course** screen.